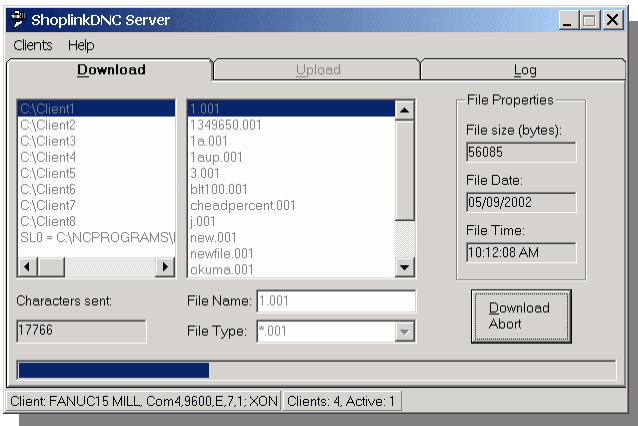


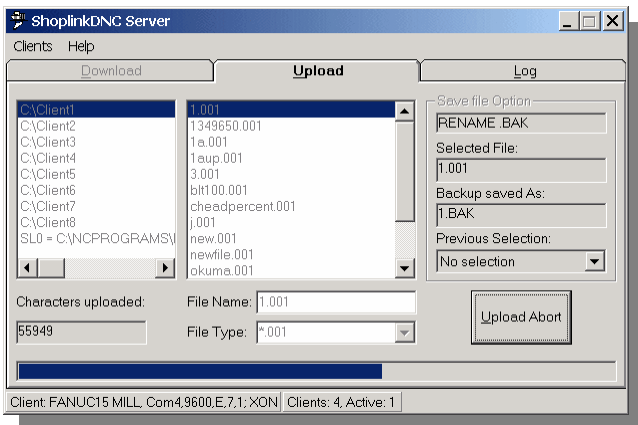
ShoplinkDNC Server

- Designed for Microsoft Windows NT,2000,XP
- Uses standard com ports and is compatible with all multi-port com board and Ethernet serial com devices
- Multi-tasking for simultaneous transfers
- Compatible with Shoplink legacy operation
- Terminal support for Shoplink terminal mode products and CNC's with terminal mode
- Compatible with all serial CNC's and CNC\NC requiring BTR's



Download

- Manual downloading through application interface
- ShopLine Terminal, DNC Window/Edit buffer and BTR Terminal download initiation
- Remote mode download initiation from CNC
- Drip feed and Drip feed with block offset via manual, Remote mode or terminal operation
- Download to any CNC using Terminal mode or Remote mode
- Any PC on the network can initiate downloads



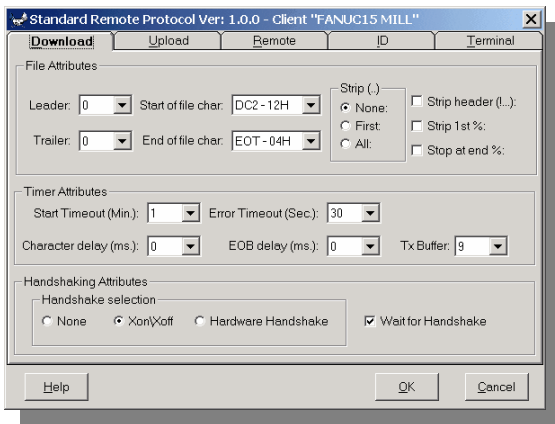
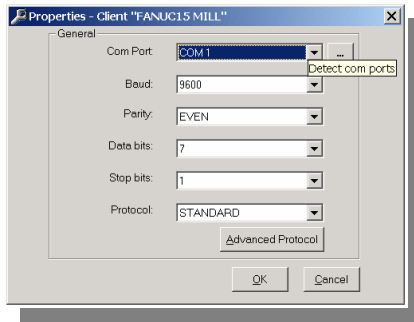
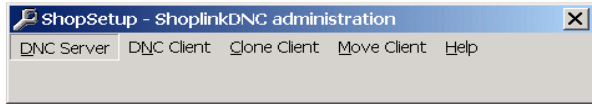
Upload

- Manual uploading through application interface
- ShopLine Terminal, DNC Window/Edit buffer and BTR Terminal upload initiation
- Remote mode upload initiation from CNC
- Remote mode upload verification initiated from CNC using upload report
- Upload from any CNC using Terminal mode or Remote mode
- Any PC on the network can initiate uploads

Date	Time	File	Status	Client
7/5/2002	6:32:24 PM	C:\Client1\1.004	IMT Download Abort	YASNAC MILL
7/5/2002	6:32:19 PM	C:\Client1\1.004	Start Download	YASNAC MILL
7/5/2002	6:32:13 PM	C:\Client1\1.003	IMT Download Abort	MORI SEKI MILL
7/5/2002	6:32:07 PM	C:\Client1\1.003	Start Download	MORI SEKI MILL
7/5/2002	6:32:02 PM	C:\Client1\1.002	IMT Download Abort	FANUC21 LATHE
7/5/2002	6:31:55 PM	C:\Client1\1.002	Start Download	FANUC21 LATHE
7/5/2002	6:07:28 PM	C:\Client1\new.001	!Timeout no xfer	FANUC15 MILL
7/5/2002	6:06:24 PM	C:\Client1\new.001	Start Download	FANUC15 MILL
7/5/2002	6:06:08 PM	C:\Client1\1.001	Download OK	FANUC15 MILL
7/5/2002	6:04:43 PM	C:\Client1\1.001	Start Download	FANUC15 MILL
7/5/2002	5:26:08 PM	C:\Client1\1.001	56038 Chars	FANUC15 MILL
7/5/2002	5:24:47 PM	C:\Client1\1.001	Start Upload	FANUC15 MILL

Logging

- Logging of all Downloads, Uploads and completion messages
- Log stored in Access 2002 Database for query and report generation



ShopSetup - ShoplinkDNC administration

- Point and click configuration menu's
- Intuitive Client CNC port setup
- One click Client port duplication (cloning)
- One click moves a Client to another Server
-

Download

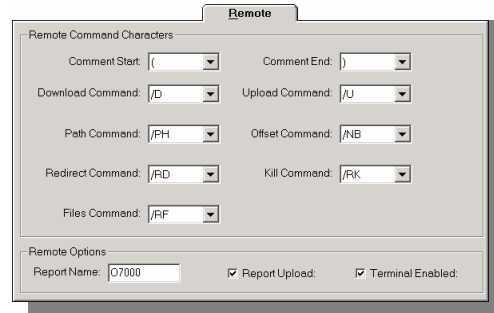
- Download attributes available on single tab

Upload

- Upload attributes available on single tab
- Automatic extension handling on uploads

Remote

- Remote attributes available on single tab



ID

- Open architecture 'transaction file' format for user designed interfaces and feature extension

Terminal

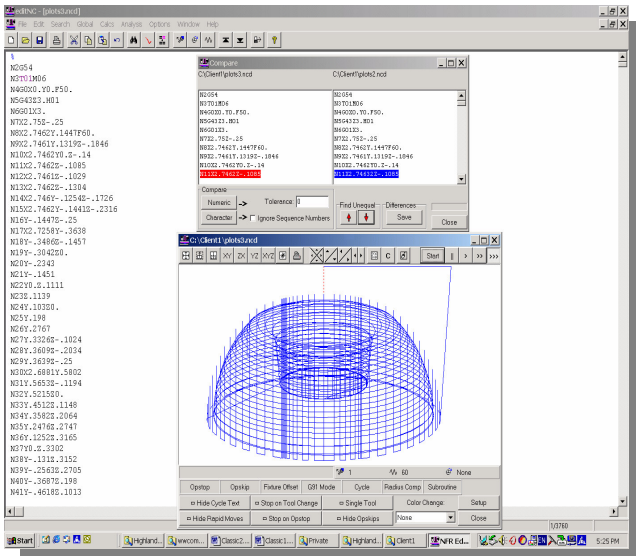
- Shop, Line and remote terminal interface

Support

- Designed and supported by Highland DNC, Inc.
- On site, telephone and email

editNC

- Integrated full featured NC code editor
- Programming calculators
- Backplotter
- File comparison
- Block offset for restarting



HIGHLAND DNC, INC. 2908 WARD KLINE RD. MYERSVILLE, MD. 21773
PH. 301-293-9530 FAX. 301-293-1940

QUESTIONS? EMAIL INFO@HIGHLANDDNC.COM